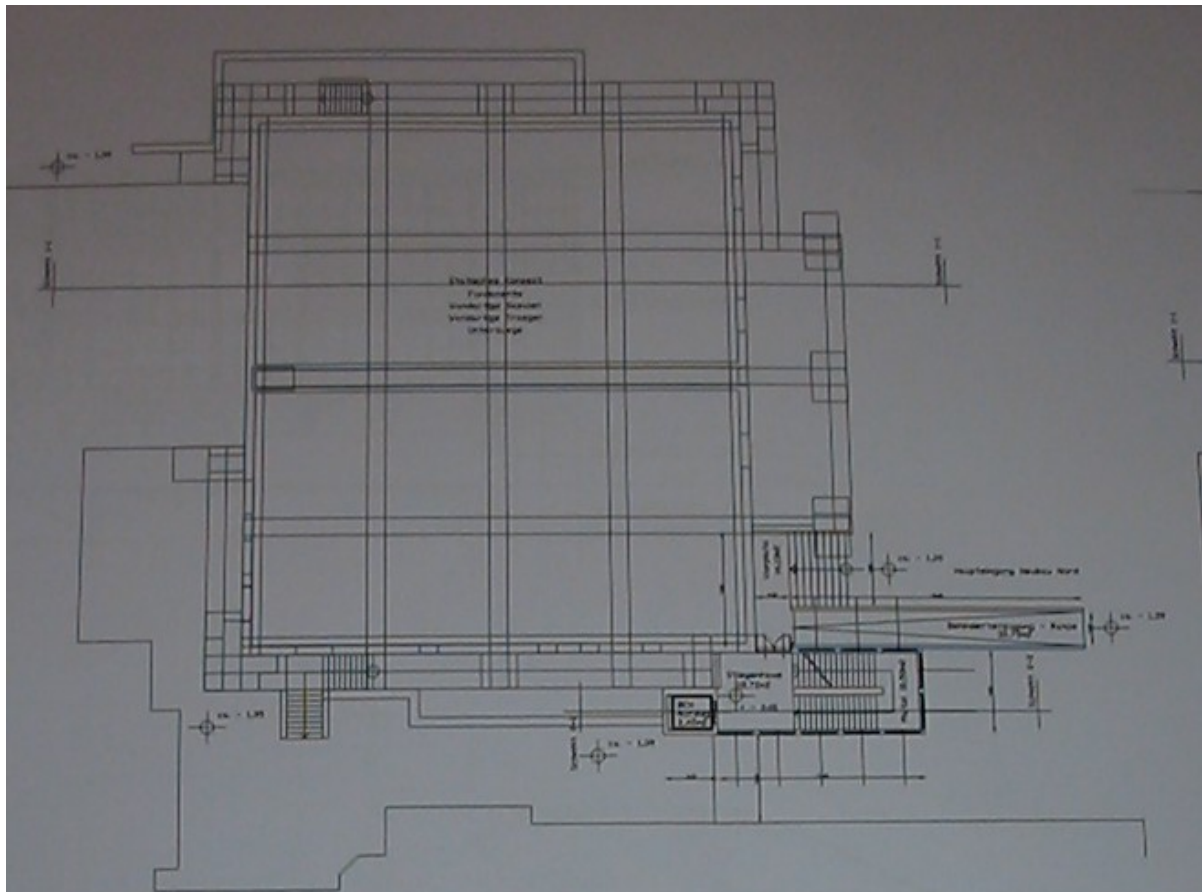


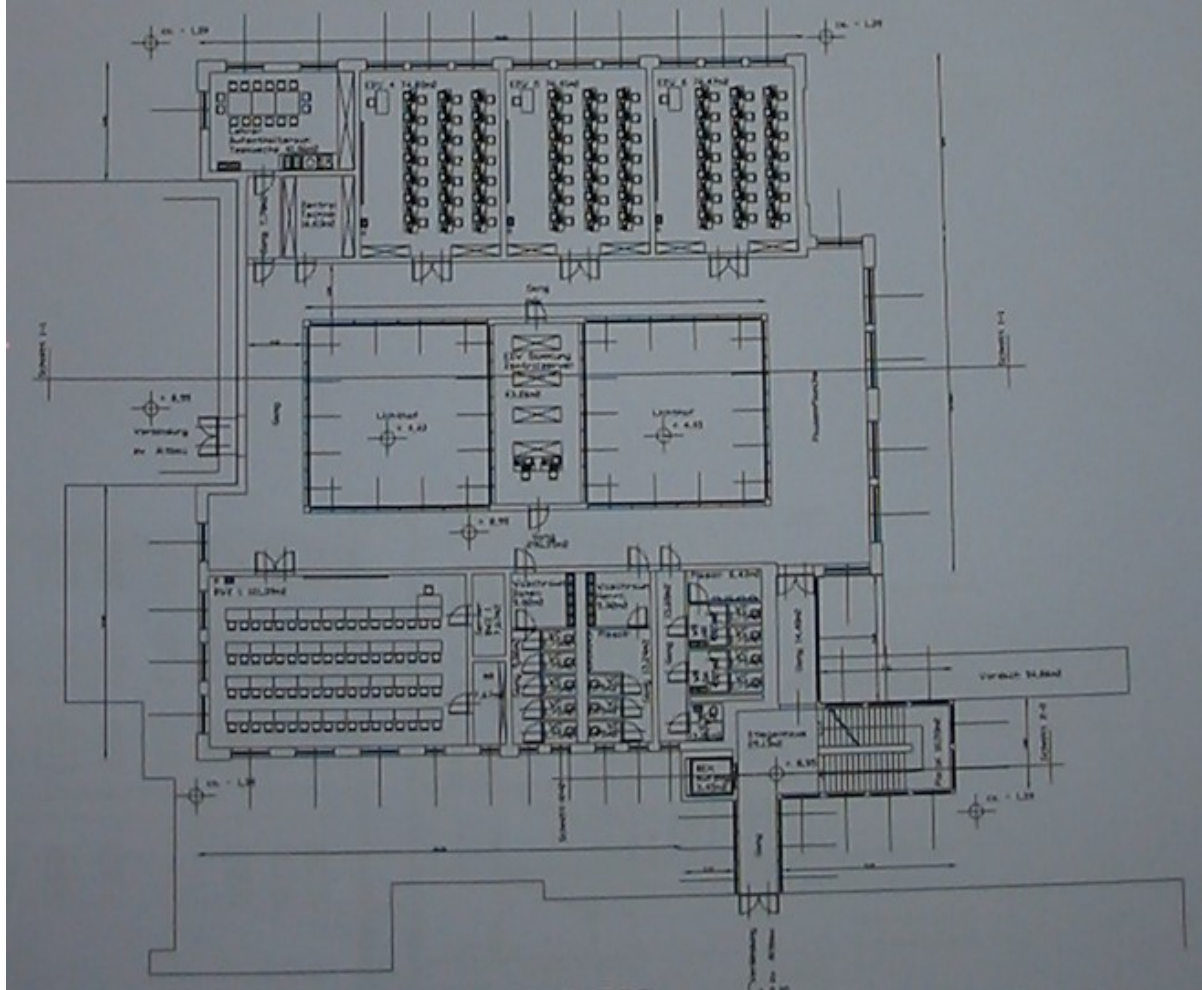
Entwurf  
BHAK - BHASCH Innsbruck  
Projekt Nummer  
73513





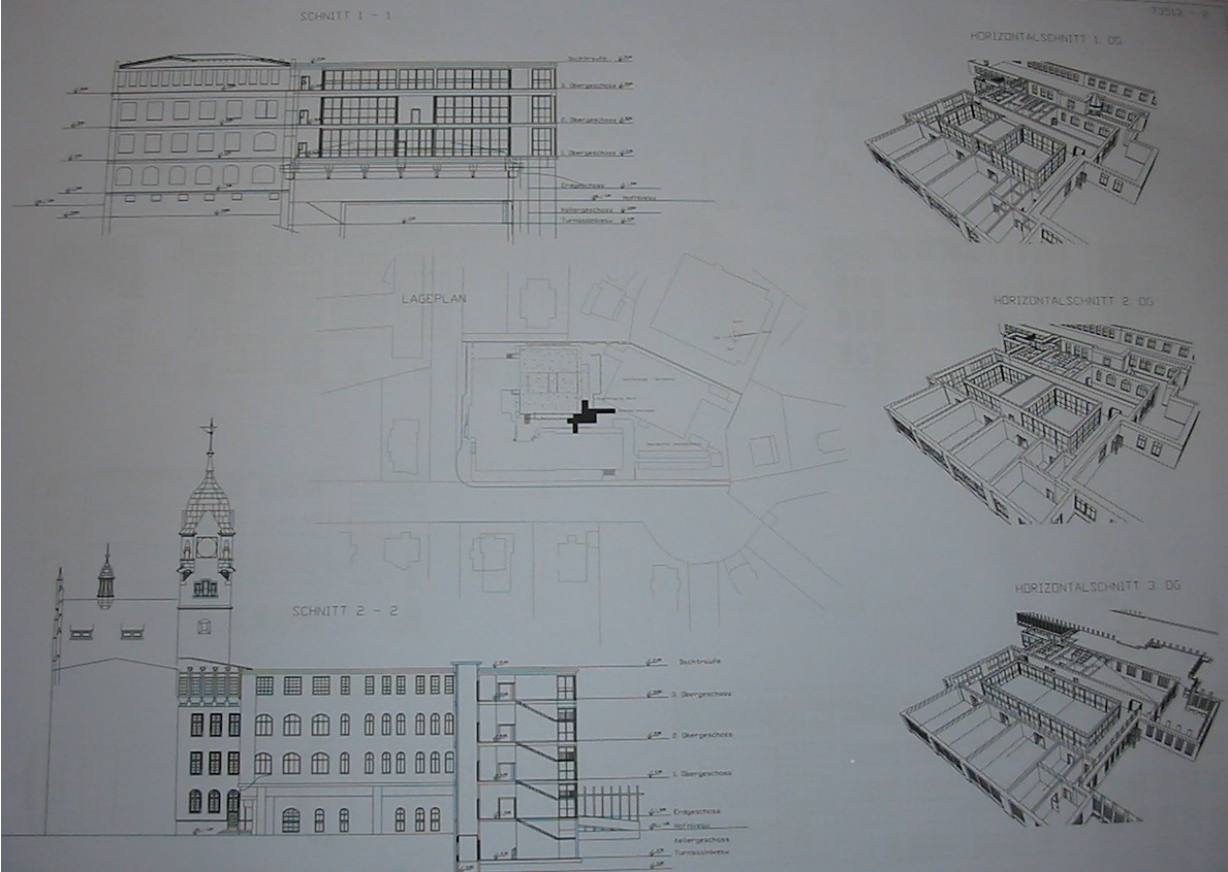
ERDGESCHOSSGRUNDRISS

Verbaute Fläche 22 120,00 m<sup>2</sup>  
 Nettoverbaute Fläche 19 200,00 m<sup>2</sup>  
 Nettoverbaute Fläche 19 200,00 m<sup>2</sup>  
 Verbaute Fläche 19 200,00 m<sup>2</sup>  
 Computer Raum 0,00 m<sup>2</sup> 304,00 m<sup>2</sup>



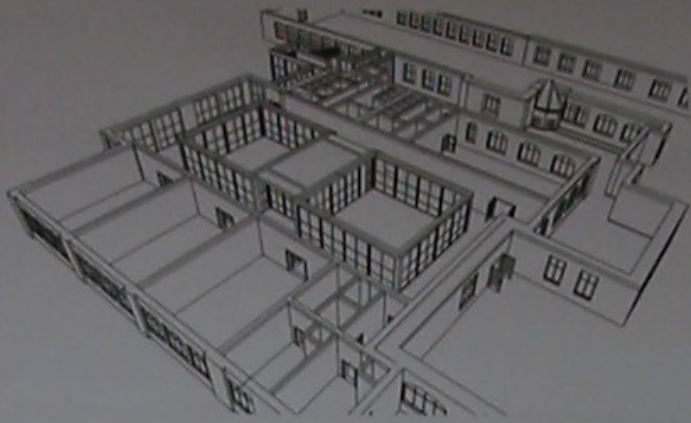
2. OBERGESCHOSS

Verbaute Fläche 220,00 m<sup>2</sup>

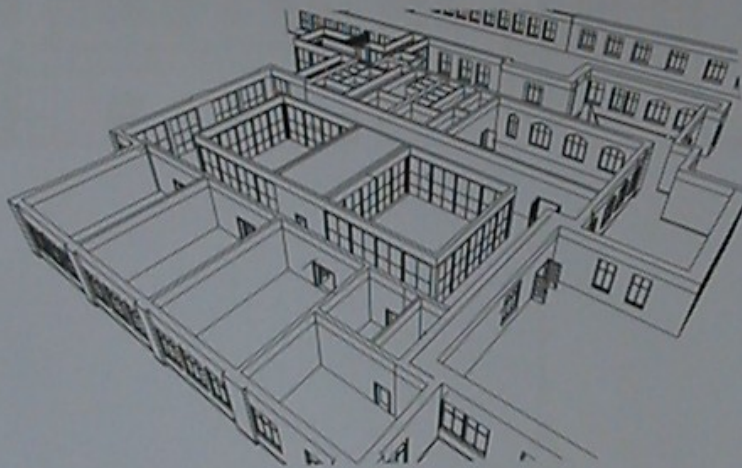




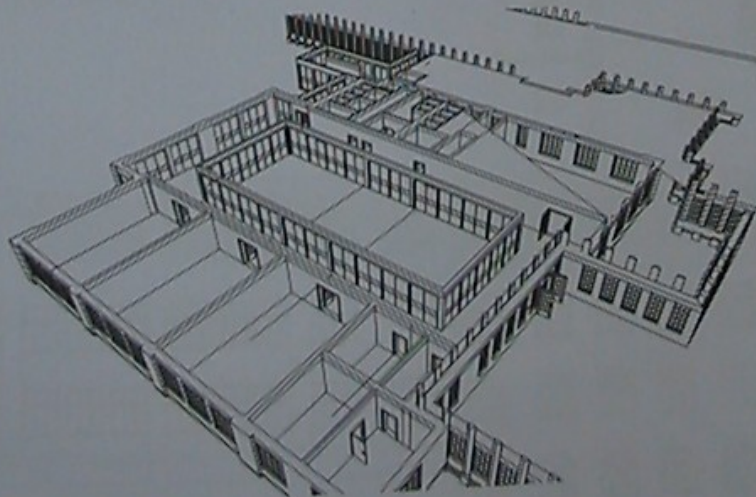
HORIZONTALSCHNITT 1. DG



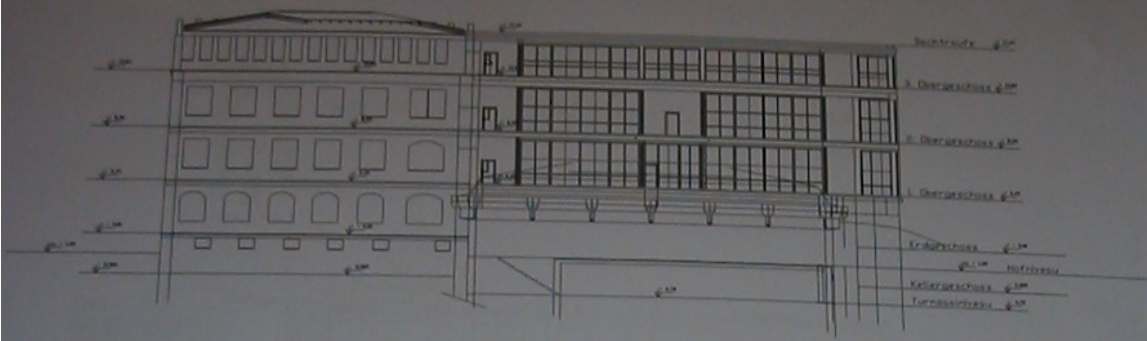
HORIZONTALSCHNITT 2. DG



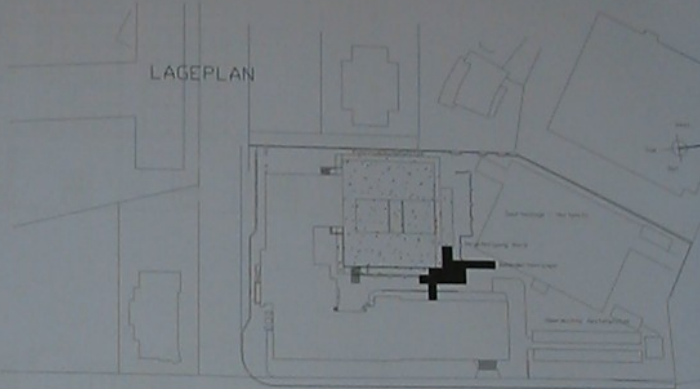
HORIZONTALSCHNITT 3. DG



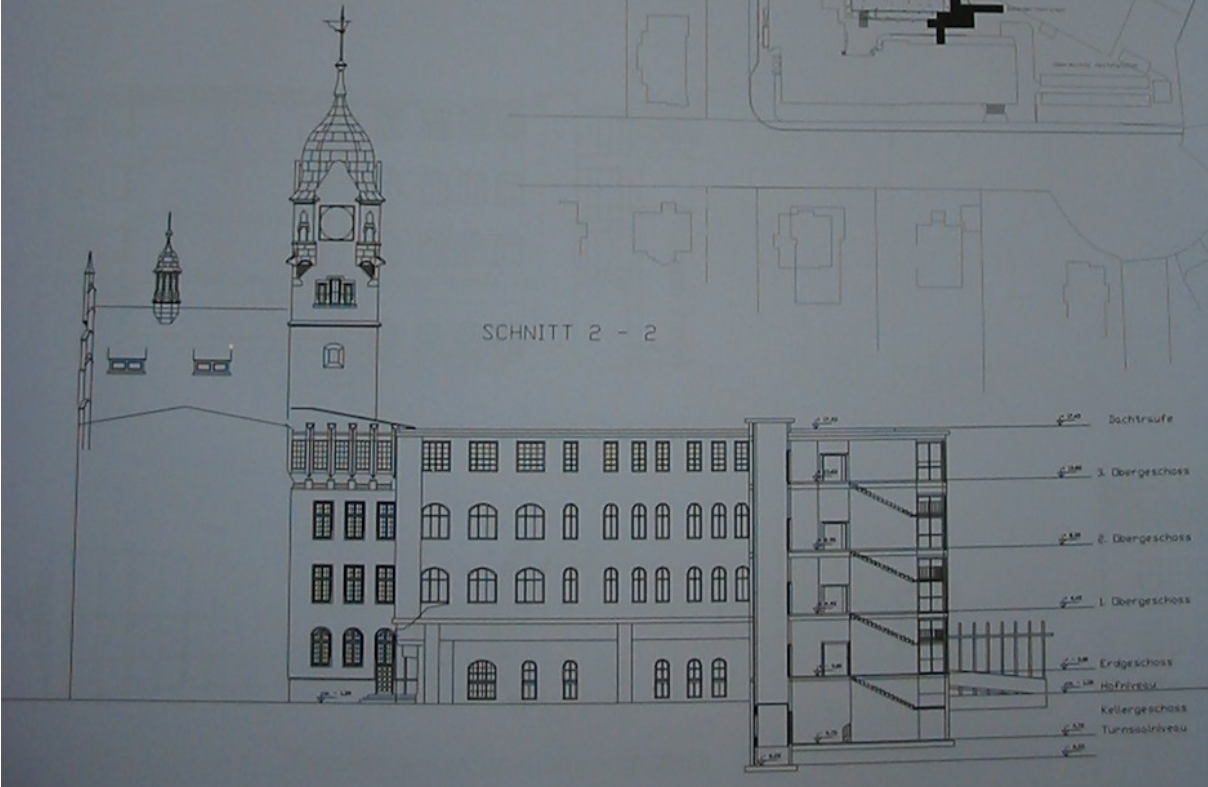
SNITT 1 - 1



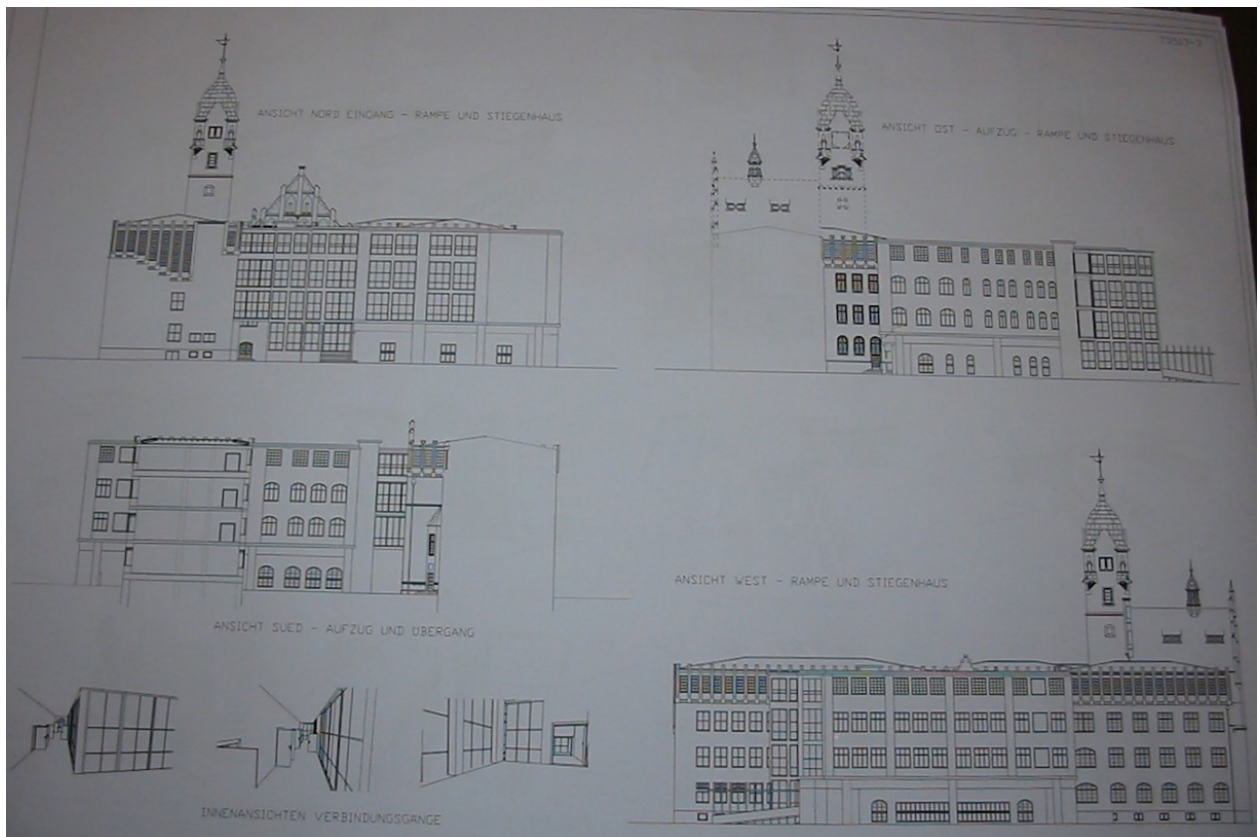
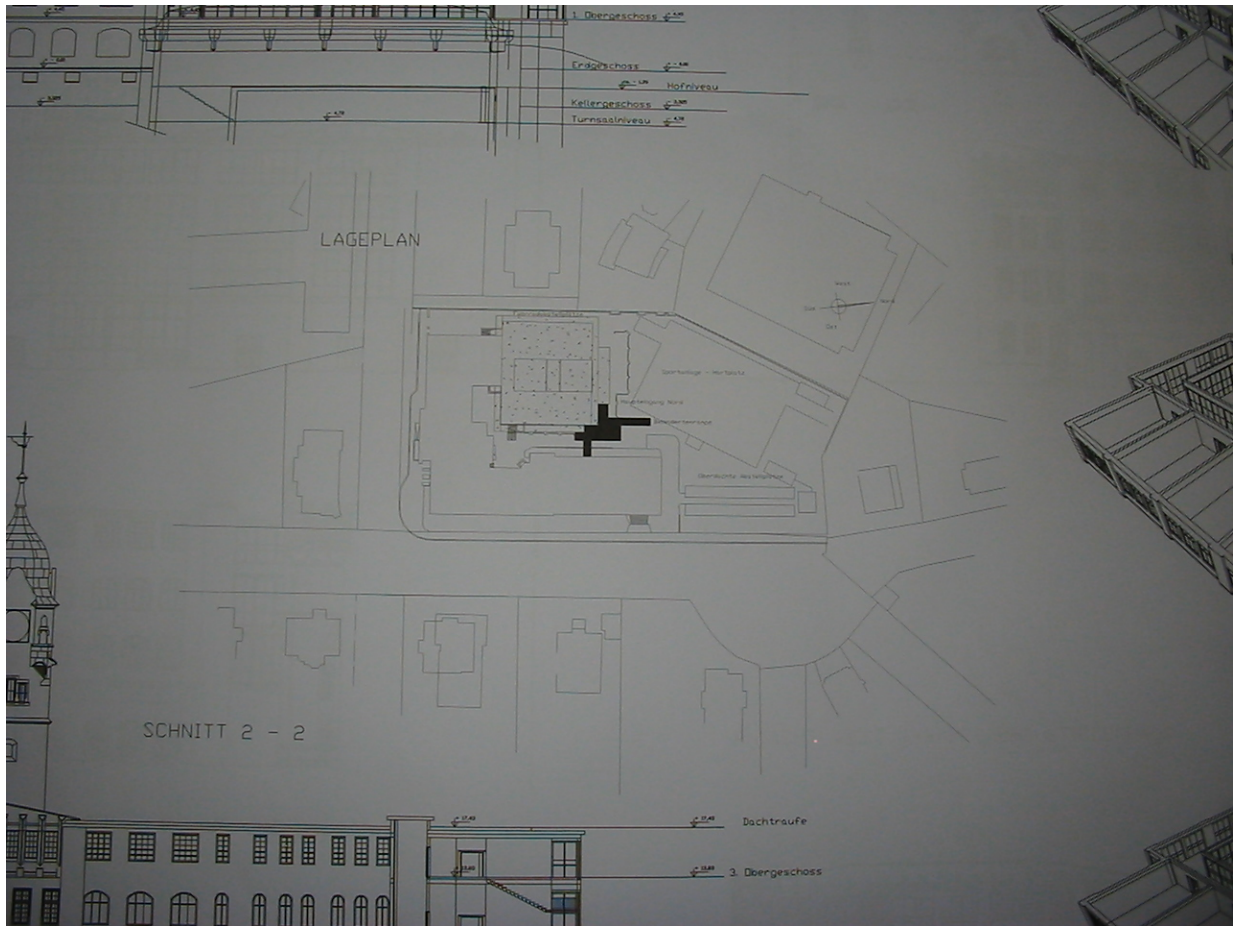
LAGEPLAN

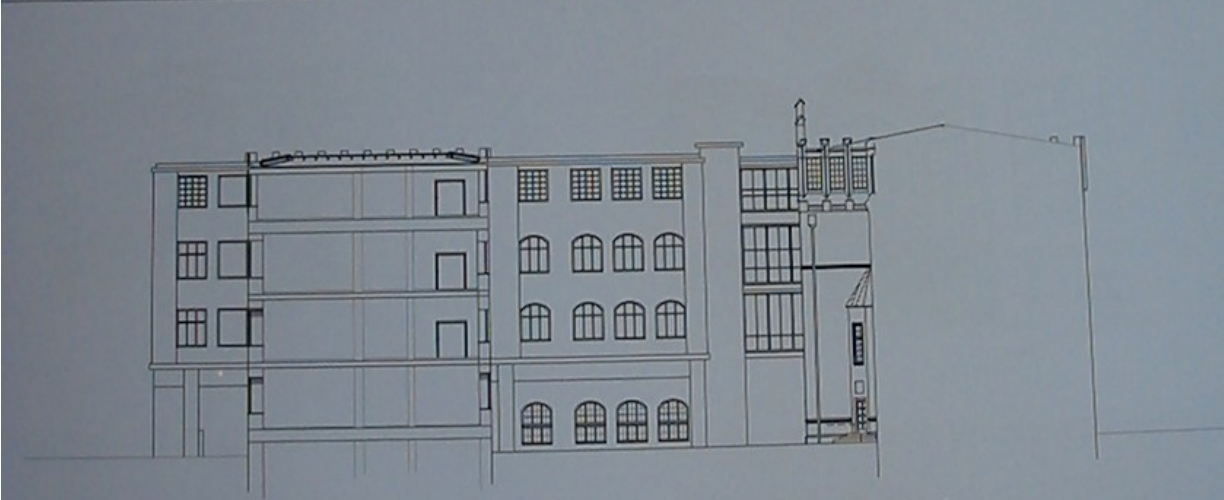


SNITT 2 - 2

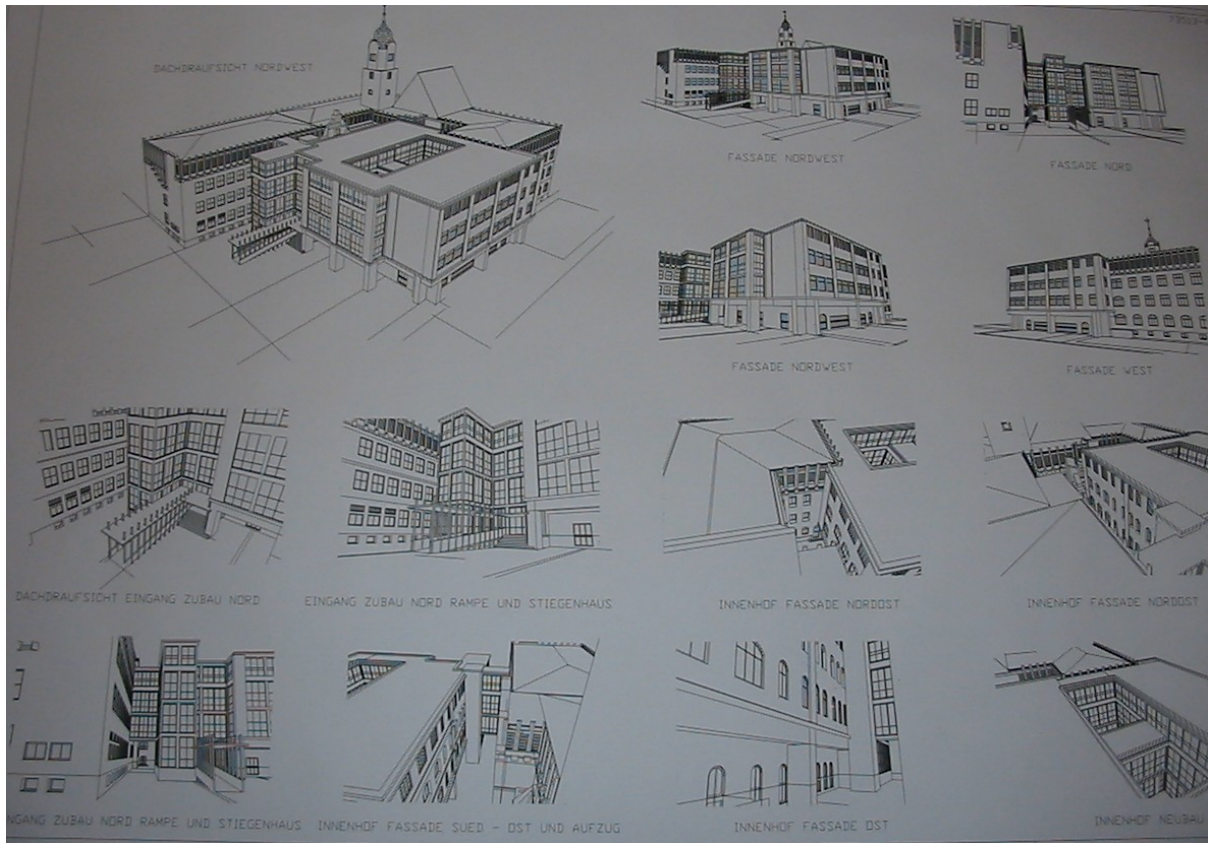




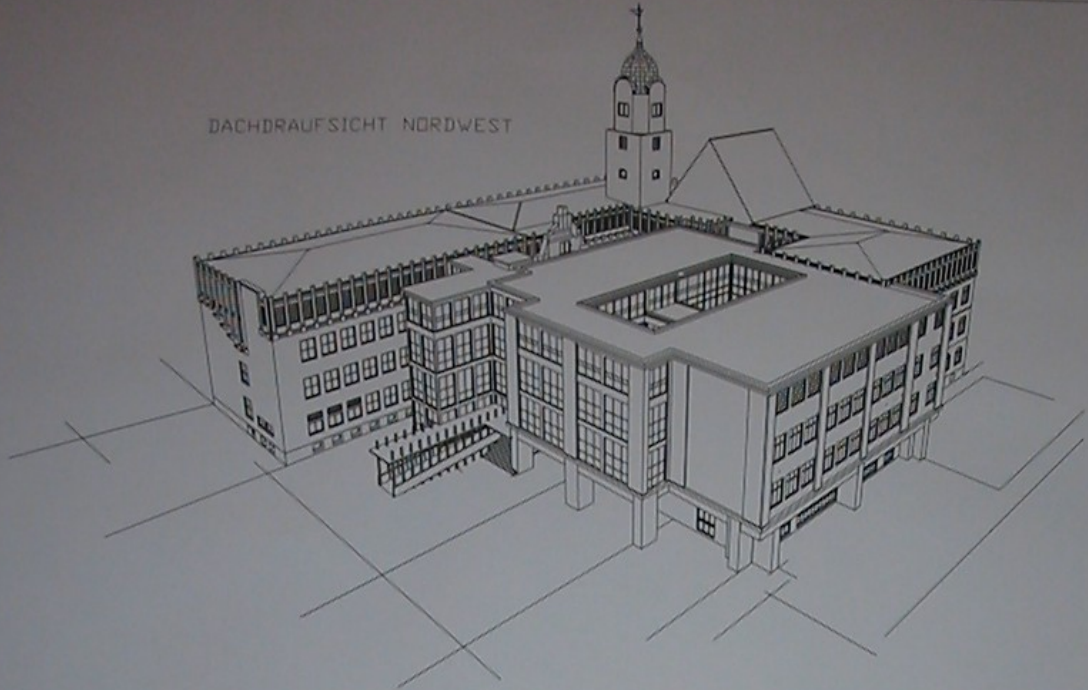




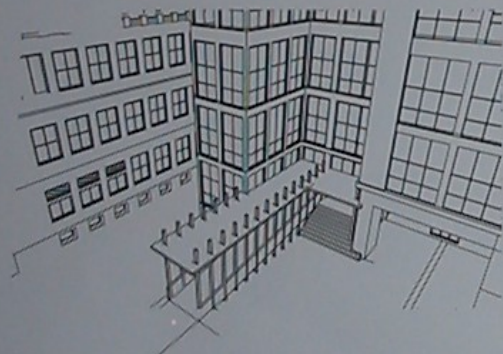




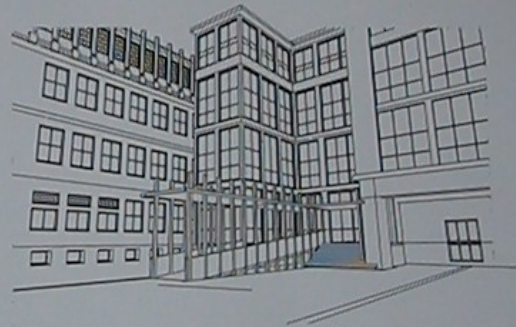
DACHDRAUFSICHT NORDWEST



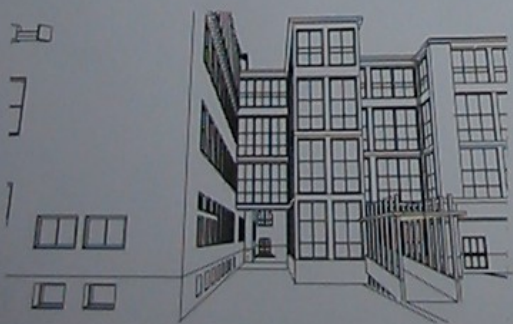
DACHDRAUFSICHT EINGANG ZUBAU NORD



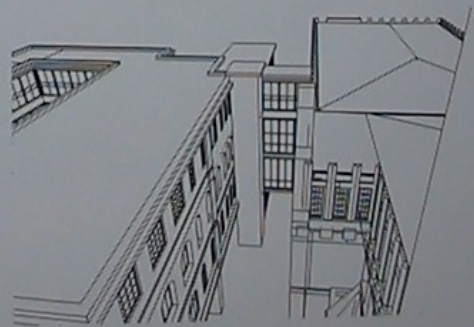
EINGANG ZUBAU NORD RAMPE UND STIEGENHAUS



EINGANG ZUBAU NORD RAMPE UND STIEGENHAUS



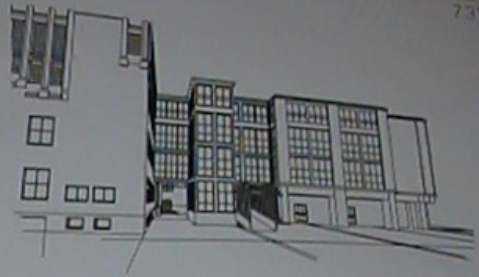
INNENHOF FASSADE SUEDE - OST UND AUFZUG







FASSADE NORDWEST



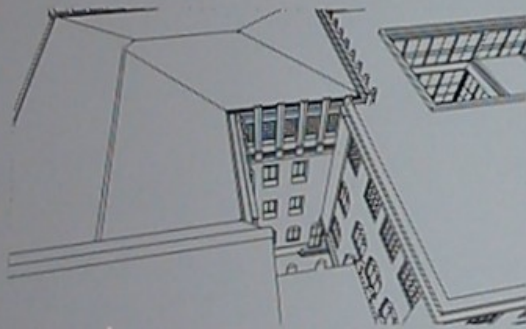
FASSADE NORD



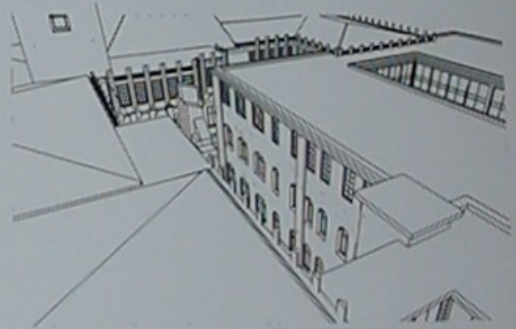
FASSADE NORDWEST



FASSADE WEST



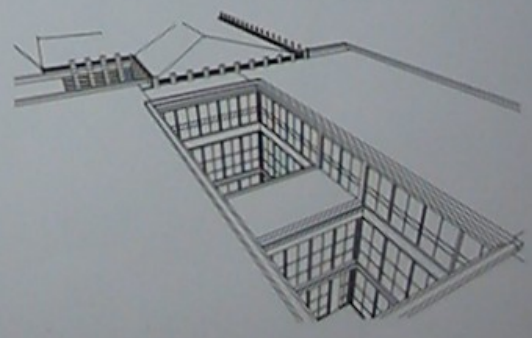
INNENHOF FASSADE NORDOST



INNENHOF FASSADE NORDOST



INNENHOF FASSADE OST



INNENHOF NEUBAU